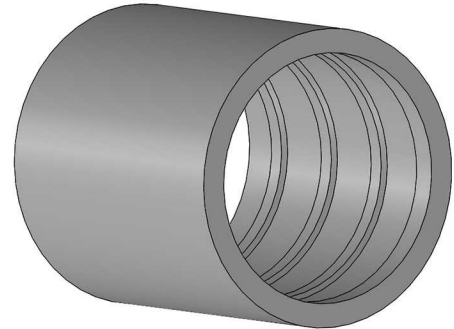
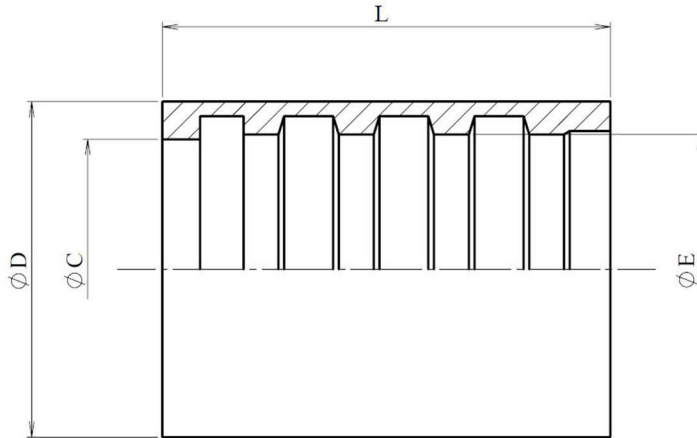


**Ferrules for smooth PTFE**

Stainless Steel AISI 316-L



Part n°	DN	L	ØC	ØD	ØE
<b>810400100</b>	1/8"	17,5	7	12	8
<b>810400300</b>	3/16"	26	8,5	14	10
<b>810400400</b>	1/4"	30	10,7	15	11
<b>810400500</b>	5/16"	30	12,8	17	13,5
<b>810400600</b>	3/8"	30	14	18	14
<b>810400800</b>	1/2"	32	18,6	24	19,3
<b>810401000</b>	5/8"	36	21,5	28	22
<b>810401200</b>	3/4"	40	24,4	30	24,9
<b>810401600</b>	1"	50	30,3	36	30,3